



Westfalia Separator® **SafetyMaster**

Technical Data | Additional security beyond the regulations of MARPOL

Concept

Over and above the high safety standard of the Westfalia Separator® BilgeMaster®-D series the Westfalia Separator® SafetyMaster provides additional security against unintended overboard discharge of oil polluted bilgewater beyond the regulations of MARPOL.

All components for:

- Sample taking
 - Sample monitoring
 - Overboard discharge control
- are combined and enclosed in a lockable stainless steel box

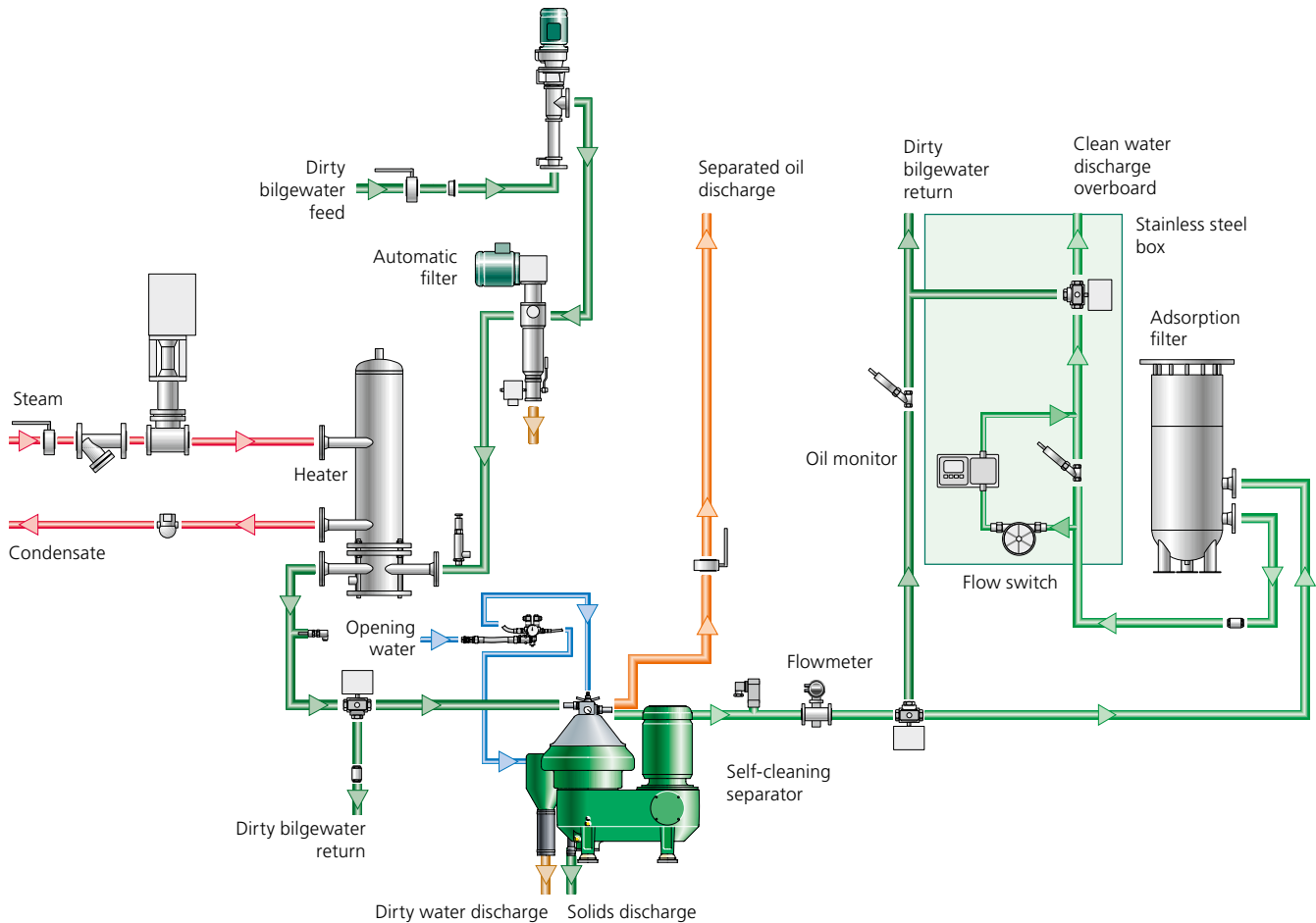
The door is supervised by a limit switch.

Further safety is provided by monitoring the flow to the oil monitor and supervising the function of the overboard valve.

A data recorder integrated in the control unit of the Westfalia Separator® BilgeMaster®-D separators provides all information on the status of the bilgewater treatment system over the last 18 months including the position of the vessel and the volume of water discharged.

The Westfalia Separator® **SafetyMaster** is available as

- An integrated part of the Westfalia Separator® BilgeMaster®-D series
- A retrofit package for the Westfalia Separator® BilgeMaster®-D series
- A stand-alone unit for all types of bilgewater separators



Description of the system

The stainless steel box of the Westfalia Separator® SafetyMaster encloses the oil monitor, the sample taking and sample return connection, the constant pressure valve, the flow switch in the sample water line, the sample water cooler and the overboard valve. The overboard valve is directly controlled by the alarm output of the oil monitor. In line of the alarm circuit are the flow switch of the sample water and the limit switch of the door.

The overboard valve is supervised by an end position switch giving an alarm if the oil content is >15 ppm and the valve is not completely closed.

Inputs to the Westfalia Separator® SafetyMaster are the 24 V power supply, the status signal separator running, compressed air, fresh water.

Outputs from the Westfalia Separator® SafetyMaster to the separator control are the analogue output 4–20 mA of the oil monitor, the status of the alarm circuit and the status of the limit switch on the overboard valve.

The flow meter installed outside the stainless steel box in the clean water outlet of the separator is used to measure the total volume and the volume discharged overboard and to monitor the conditions

of the separator and feed pump. The data recorder incorporated in the regular scope of delivery of the integrated version and retrofit package of the Separator® BilgeMaster®-D type logs the:

- Time (UTC) and position of the vessel
- Actual capacity and residual oil content
- Status of the overboard valve
- Total volume treated and volume discharged overboard

For the Westfalia Separator® SafetyMaster requested as stand-alone unit the data recorder can be supplied optionally.



GEA Mechanical Equipment

GEA Westfalia Separator

Werner-Habig-Straße 1 · 59302 Oelde (Germany)

Phone +49 2522 77-0 · Fax +49 2522 77-1778

www.westfalia-separator.com